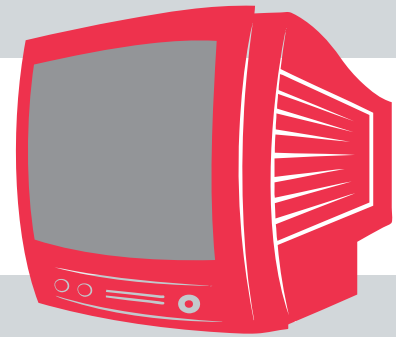
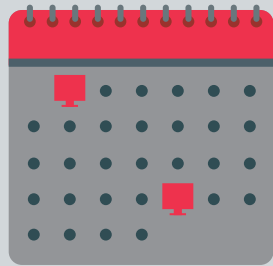


# TV Tip-Overs

How kids are getting hurt and what to do about it.



Every 3 weeks a child dies from a television tip-over.\*



Ten children go to the ER every day because of a TV tip-over.



7 out of 10 kids injured by TV tip-overs are ages 5 and under.



A 36" heavier, box-style CRT TV falling three feet creates the same momentum as a 1-year-old child falling 10 stories.

34% of households still have a CRT in the home.



36% of child fatalities from 2000-2016 due to TV tip-overs involved someone climbing on the furniture or TV.



From 2000-2016, 51% of child fatalities due to TV and furniture tip-overs occurred in a bedroom.

## Safety Tips



**Properly place your old TV.** If you have a heavier, box-style TV, place it on a **low, stable piece of furniture** that is appropriate for the TV's size and weight.



**Secure your flat-panel TV.** Be sure your flat-panel TV is properly secured with **a wall mount that has a safety certification** by an independent laboratory (such as UL, CSA, ETL).



**Recycle your TV.** To find a location near your home that **safely and responsibly recycles** unwanted TVs, go to [www.GreenerGadgets.org](http://www.GreenerGadgets.org).

\* Based on estimates from CPSC and NEISS data for 2000-2016.